



Miltonvale Community Development

PEI Department of Housing,
Land, and Communities



Building Together - Prince Edward Island Housing Strategy

- Prince Edward Island, like our counterparts in the Atlantic region, across Canada, and in many other jurisdictions across the globe, is faced with a housing crisis involving a shortage of housing options and affordability challenges.
- Priorities focus on acceleration to facilitate the growth of housing supply, affordability to provide more options for low- and medium-income Islanders, and vulnerability to support those who are most in need.
- Make use of available government-owned property to create affordable housing development.

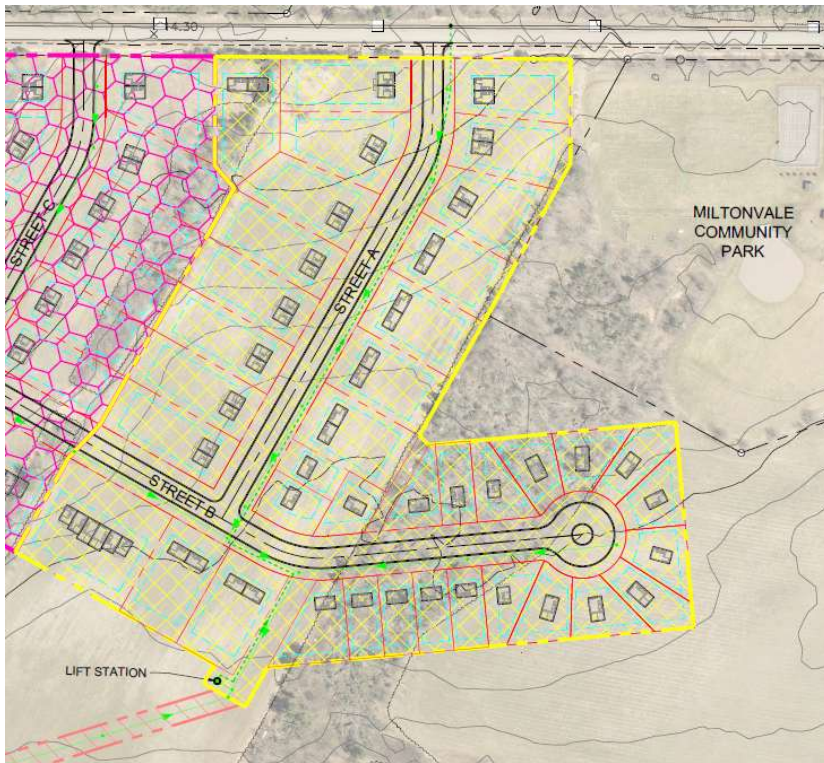


Miltonvale Park Development

- The Department of Housing, Land and Communities (HLC) has developed a community design for 75 acres of land in Miltonvale Park that includes a mix of housing types and densities.
- This approach will be a model for ecological planning and a tiny home community design.
- There is a significant need for social housing in Charlottetown and surrounding areas with approximately 106 families/individuals and 37 seniors on the housing registry that identified this area as a preferred location.
- Proposed phased approach to develop the land.



Miltonvale Park Development – Key Features



All lots and units to be owned and maintained by the PEI Housing Corporation

Residents will include a mix of families, seniors, and single individuals taken from the PEI Social Housing Registry

Rural identity, promotion of community, safety, and stability

Proposed Phase 1 – 2025

- 39 Lots – 20 “Tiny Home”, 18 Semi-detached, 1 Six-unit Multiplex

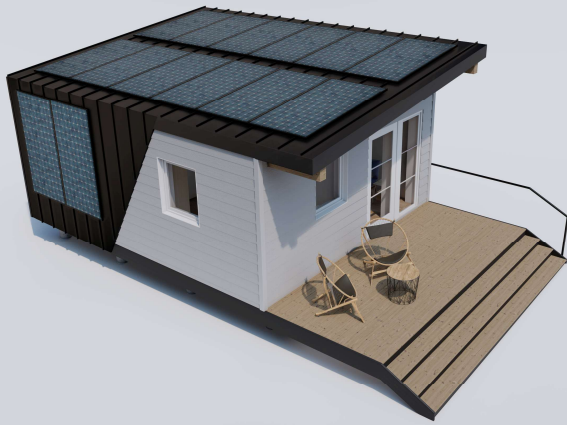


Miltonvale Park Development

Phase 1 – Survey Plan



Tiny Home Concept



Miltonvale Development – Design Considerations

- Phase 1 Approval from Charlottetown for Water and Sewer extensions
- Received comment from Provincial Traffic Engineer on the ability of existing roads/intersections to accommodate predicted increase in traffic
- Archeological Site Assessment completed
- Phase 1 Environmental Site Assessment completed showing no concerns
- Duty to Consult process with L'nuey completed with no objections
- A coastal hazard assessment was completed, and the development will take into account an extreme flood scenario. A buffer will keep infrastructure outside of the at risk area.



Miltonvale Development – Proposed Timeline

